

Achieving this is through

Pursuing curvature standards

Technological strength,



Sanei mainly produces optical jigs that support optical components. Strict dimensional accuracy is required for spherical machining of cast plates and other optical jigs required for polishing. We utilize the technology we have cultivated over many years to meet these strict demands and produce products that meet the needs of the times.

Responding to the needs of the times

Production Power,

We will develop together with the optical industry by responding to, customizing, and producing the necessary jigs and tools. We are also focusing on our "Field Power" that can meet diversifying needs at any time.

and

Human Power

Since our founding, we have refined not only our technology but also our people. The power, strong courage, kind spirit, grateful heart, and generous efforts of each staff member are important assets. We believe that the origin of our services is human power, and we meet customer expectations through manufacturing.

OUR CONCEPT



Everything is Power

Optical jig
Spherical processing

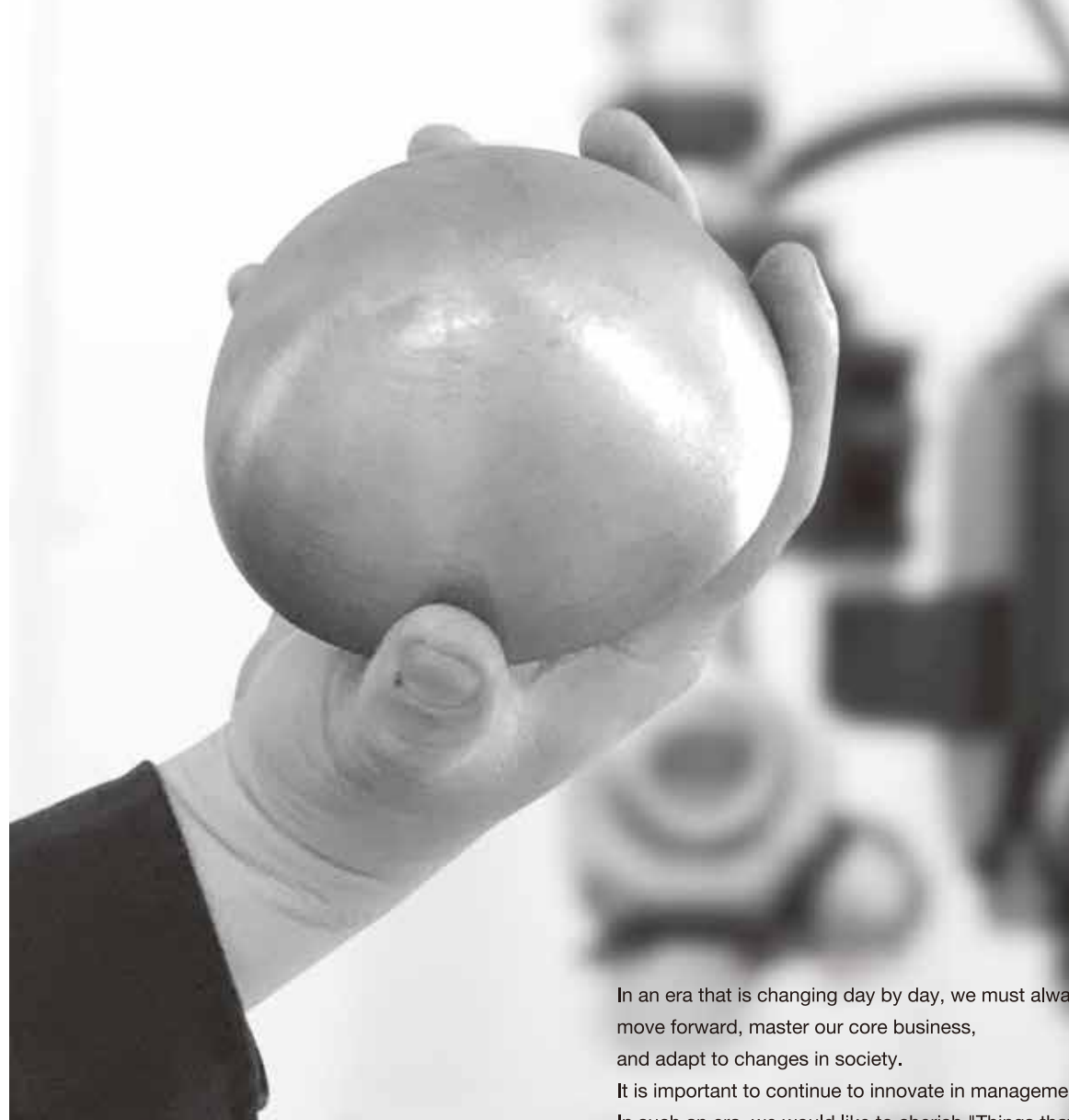
COMPANY PROFILE



1903-1 Hiraide, Tatsuno-machi, Kamiina-gun,
Nagano Prefecture 399-0422
TEL.0266-44-3370 FAX.0266-44-3371
<https://sanei-jigu.jp>



WE KEEP CHANGING WITHOUT CHANGING OUR SOUL!



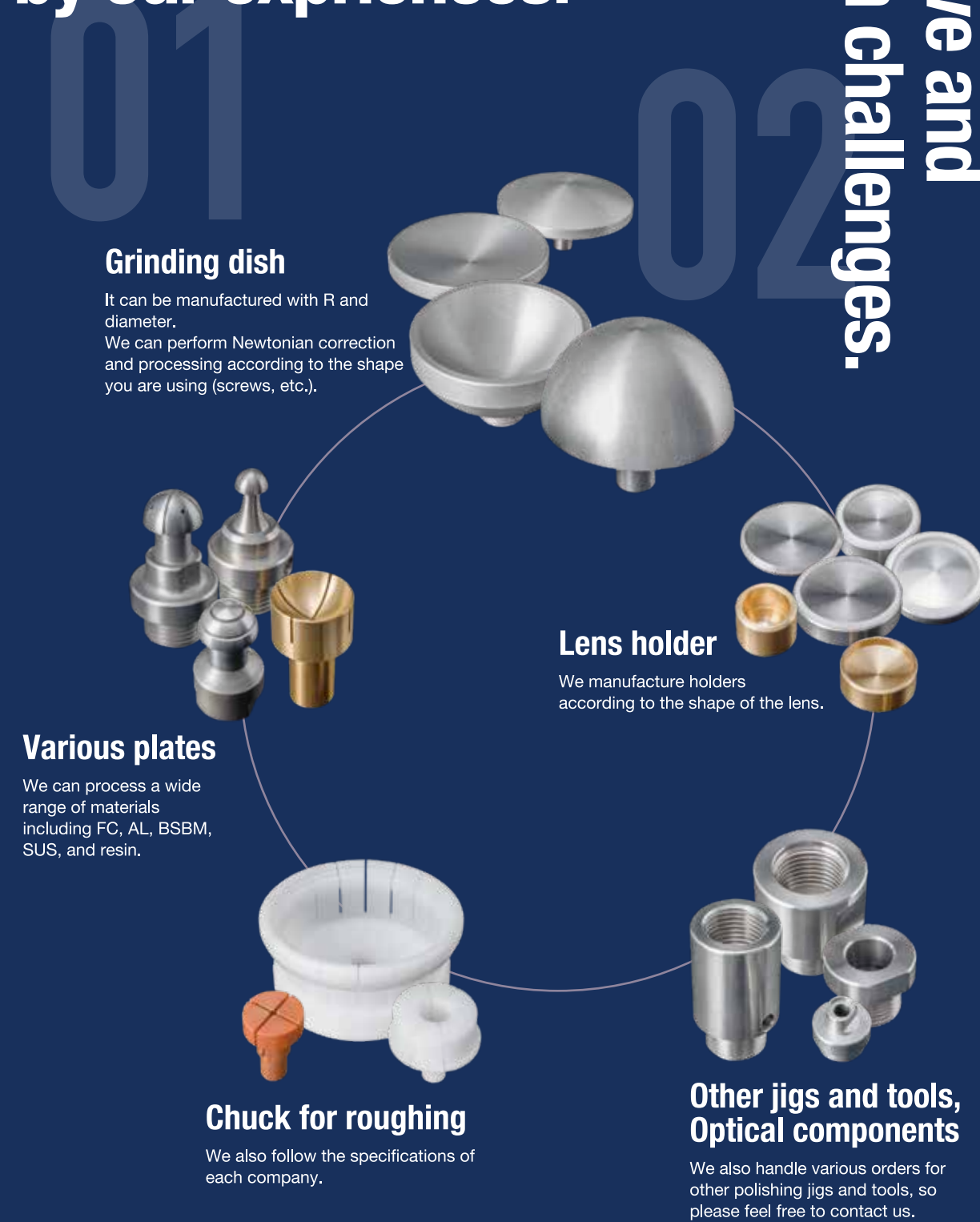
In an era that is changing day by day, we must always move forward, master our core business, and adapt to changes in society. It is important to continue to innovate in management. In such an era, we would like to cherish "Things that do not change."

The "Things that do not change" that we value are the essence of the company. I believe that these are values that do not change over time. We will continue to face the "Things that do not change" that we have cultivated since our founding. We will continue to provide jigs and tools that will be needed as the optical industry develops.

WE KEEP CHANGING WITHOUT CHANGE!

We build on the know-how generated by our experiences.

We continue to evolve and take on challenges.



And we pay thorough attention to curvature.

COMPANY OUTLINE



Management philosophy

Always think and act.
Deal with everything with sincerity.
Actively study to improve technical skills.
Adapt to changing times.

Company Profile

Company name : SANEI Co., Ltd.
Establishment : April 1984
Capital : 6,000,000 yen
CEO : Minoru Yanagisawa
Number of employees : 10

Office : **Tatsuno factory** (Lens holder design and manufacture)
1903-1 Tatsuno-machi, Kamiina-gun, Nagano 399-0422
Tel:0266-44-3370 Fax:0266-44-3371
Minowa factory (Casting plates, FC products)
7721-1 Nakaminowa Nakahara, Minowa-machi, Kamiina-gun, Nagano, 399-4601
Tel:0265-98-6801 Fax:0265-98-6805
Shimosuwa office
219-21 Shimosuwa-cho, Suwa-gun, Nagano 393-0068
Tel:0266-28-6756 Fax:0266-28-6756

Bank : Suwa Shinkin Bank Shimosuwa Branch
Nagano Prefecture Credit Union Shimosuwa Branch
82 Bank Tatsuno Branch

Business items

- Fixed plates, various polishing plates
Cast iron, brass, stainless steel, iron, aluminum, baked etc.
From R1.0 to flat surface
※For large diameters, please contact us.
- High-speed polishing plates, diamond plates and pedestal plates
- Lens Holder (Design and manufacture of various plates and holders based on lens drawings)
- CG chuck (each company)
- Other optical jig production



Main equipment

NC lathe	14units
Composite NC lathe	3units
Spherical surface processing machine	2units
General-purpose lathe	3units
Milling machine	3units
Drilling machine	8units
IKEYENCE Image measuring Machine	1 units
AUTOCAD	3units
AUTODESK fusion(3DCAD)	1 units

As of January 2025

History

- Apr. 1985 Norio Yanagisawa founded SANEI Y.K. in Shimosuwa town.
- Apr. 1990 Shimosuwa factory expansion/renovation
- Nov.2005 Tatsuno factory completed.
- Apr. 2011 Company name changed from SANEI Y.K. to SANEI Co., Ltd. Minoru Yanagisawa appointed as CEO.
- Sep. 2012 Integrated production base merged with Tatsuno factory.
- Nov.2017 Tatsuno factory expansion/renovation.
- Apr.2023 Sanei Online Shop, Koroya Opened.
- Nov.2024 Minowa factory opened.